



# SPOA7-MP TWO POST PAD LIFTS

7,000 lbs. / QUICK SERVICE MOVEABLE PAD LIFTS

## ADJUSTABLE DRIVE-OVER PAD / QUICK SERVICE LIFTS

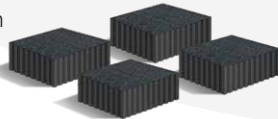
Improve vehicle reach with ultra-low profile, easy to adjust pads. With a minimal 2.625" drive-over clearance, vehicles can be spotted quickly, easily and accurately.

### Faster service = more revenue. Perfect for a quick-lube bay.

The quick service pad lift includes time saving features that help get your customers in and out fast with efficient, no-appointment necessary maintenance and routine service.

### Rubber spacer blocks provide clearance

Includes four (4) each 1.5" and 3" blocks



Lift pads accommodate most unibody vehicles



MODEL SHOWN: SPOA7N6XOBL

### SPOA7-MP MODELS

BL = Blue / RD = Red

### ADJUSTABLE PAD LIFT Movable Pads (MP)

#### STANDARD

SPOA7N6XOBL  
SPOA7N6XORD

#### SHOCKWAVE EQUIPPED

SPOA7U6X5BL  
SPOA7U6X5RD

Rise*	STANDARD SHOCKWAVE	70 5/8" to 73 5/8" 73 5/8" to 76 5/8"
Overall Height		11' 8 1/2"
Overall Width		11' 5 3/8"
Drive-thru		78 1/8"
Inside Columns		107 1/4"
Pad Length Overall Retracted / Extended		71 1/8" to 87 1/4"
Min/Max Inside Distance Between Pads		39 7/8" - 56"
Min Pad Height		2 5/8"
Min Bay Size		12' X 24'
Ceiling Height Min With SHOCKWAVE		12' 12' 6"
Motor / Voltage With SHOCKWAVE		2 HP, 208-230V 5 HP / 110V
Time of Rise / Descent With SHOCKWAVE**		45 / 40 seconds 25 / 19 seconds

\* Rise measures lowest and highest position of the supplied adapters from floor to full cylinder stroke

\*\* Times vary depending on vehicle weight

Heights and widths reflect standard settings

### FEATURES:

- 7,000 lbs. capacity models
- 4 adjustable lift height options
- Available with SHOCKWAVE™ power
- Original "Double S" column
- ALI Gold Certified

### SUPERCHARGE SPOA7 lifts with SHOCKWAVE™ SPEED

SHOCKWAVE DC powered lifts are the fastest in the world! Boost productivity and increase service numbers.



SCAN VIDEO CODE TO LEARN MORE

## Rotary Lift

2700 Lanier Drive / Madison, IN 47250, USA

rotarylif.com     

### North / South America Information

Sales: 800.445.5438  
insidesales@vsgdover.com

Tech. Support: 800.445.5438  
technicalsupport@rotarylif.com

### Global Contact Information

USA: 1.812.273.1622

Canada: 1.905.812.9920

Latin America / Caribbean: 1.812.273.1622

Brazil: +55.11.4534.1995

Government Sales: 800.445.5438 X5655

For additional information: rotarylif.com/Government-Purchasing-Assistance/

Product specifications, part numbers, images and component descriptions are subject to change without notice or liability.

Lit# Rotary SPOA7MP Cutsheet.2021.11

©2021 VEHICLE SERVICE GROUP™, Printed in U.S.A., All Rights Reserved. Unless otherwise indicated, ROTARY, VEHICLE SERVICE GROUP™, DOVER and all other trademarks are property of Dover Corporation and its affiliates.

