

HEAVY DUTY PRODUCTIVITY FOR YOUR MAINTENANCE FACILITY



70Q / 703Q TRADITIONAL INGROUND 50,000 / 75,000 LBS. CAPACITIES

Rotary heavy-duty inground lifts are designed to increase productivity by providing an obstruction free shop and decades of service with minimum maintenance costs. Traditional inground lifts offer the adjustability needed to service a wide variety of vehicles with numerous available options to customize your lift for your exact needs. Designed and installed in their own containment system they offer an affordable solution for anyone looking to engage larger vehicle via the axles.

NOW WITH UPDATED FEATURES!



NEW Locking System

Lower to locks is standard equipment on the new 70Q traditional inground. This new design is based on the popular and proven MOD locking system.

Note: Lock cover removed for clarity of internal view

NEW Upright Control Console

The ergonomic, upright control console eliminates the need to bend down to run the lift - operates from a comfortable, standing position.

Push Button Equalized Controls

Simple push button controls eliminate manual equalization of handles.



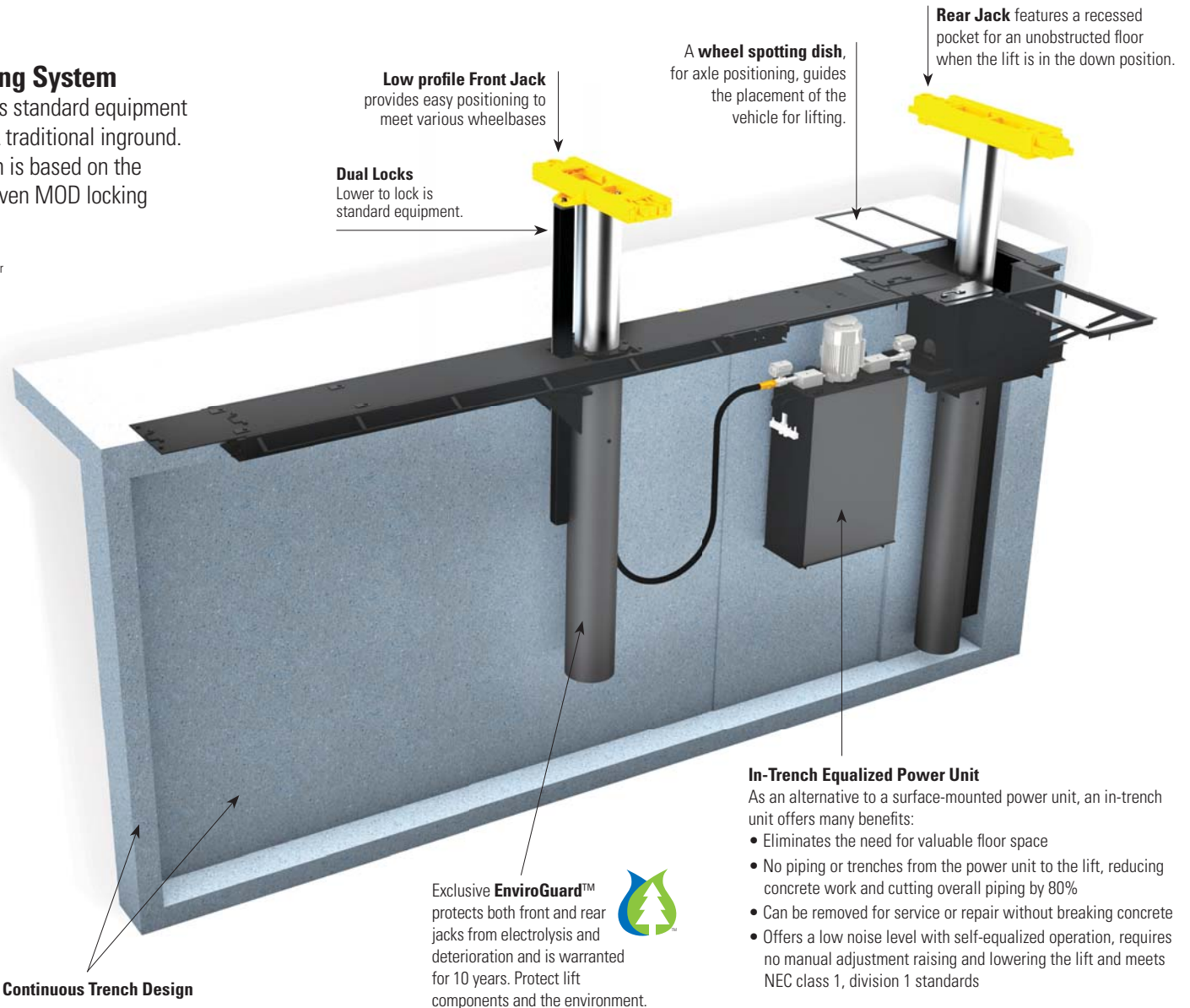
NOW Third Party Certified

The 70QE2xx AND 703QE2xx inground lift meets the ANSI / ALI ALCTV 2011 standard, including the required third-party validation.

Your assurance of certification is the gold ALI/ETL certified label.



Model Shown: 70QE2xx
50,000 lbs. capacity inground lift



Low profile Front Jack
provides easy positioning to meet various wheelbases

Dual Locks
Lower to lock is standard equipment.

A **wheel spotting dish**, for axle positioning, guides the placement of the vehicle for lifting.

Rear Jack features a recessed pocket for an unobstructed floor when the lift is in the down position.

Continuous Trench Design

Exclusive **EnviroGuard™** protects both front and rear jacks from electrolysis and deterioration and is warranted for 10 years. Protect lift components and the environment.

In-Trench Equalized Power Unit

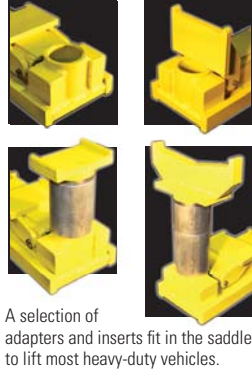
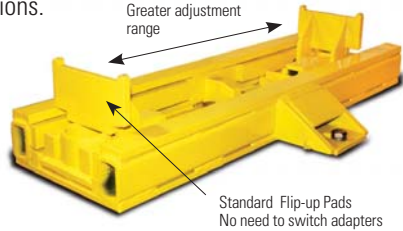
As an alternative to a surface-mounted power unit, an in-trench unit offers many benefits:

- Eliminates the need for valuable floor space
- No piping or trenches from the power unit to the lift, reducing concrete work and cutting overall piping by 80%
- Can be removed for service or repair without breaking concrete
- Offers a low noise level with self-equalized operation, requires no manual adjustment raising and lowering the lift and meets NEC class 1, division 1 standards

STANDARD FEATURES

Patented Universal Saddle Adapter

The universal saddle adapter is designed for the front or rear post. A selection of adapters and inserts fit in the saddle to lift most difficult heavy-duty vehicles. Standard flip-up pads permit fastest setup with no need to swap adapters. Most inserts rotate 360 degrees. An even **lower profile version** is available for specific transit applications.



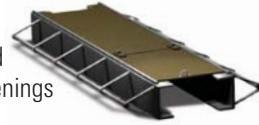
A selection of adapters and inserts fit in the saddle to lift most heavy-duty vehicles.

Continuous Trench Design

The lift is housed in a continuous concrete vault which forms a barrier between the lift and the ground; increasing the life of the lift and protecting the environment. This enclosed design allows for easy access to all components for inspection and maintenance

Standard Front Pit Covers

Manually moveable pit covers are standard on inground lifts. They can be moved to eliminate dangerous pit openings as required by OSHA.



Front Jack

Hydraulic adjustment allows for easy positioning to meet various wheelbases.

Removable Hydraulic Jack Assembly

The jack assembly in both the front and rear housing is removable for inspection or repair without the need to break concrete, and each jack has an 18-position locking leg which locks every 3". The jack can be released automatically for lowering without going under the lift.

Inground Lift ACCESSORIES

Tripod Stands

Spring assisted caster wheels and height adjustment allow for easy positioning with 4" fine tune screw adjustment.

Capacities from 18,000 to 33,000 lbs.



Adapter Rack

Keeps the lift bay clear and uncluttered and all your adapters in one place.

Shown: FD2361



TRADITIONAL INGROUND LIFT CHECKLIST

70QE2xx

50,000 lbs. total capacity (25k per jack)
2) 10 5/8" jacks - 1 movable jack and 1 fixed jack

703QE2xx

75,000 lbs. total capacity (25k per jack)
3) 10 5/8" jacks - 2 movable jacks and 1 fixed jack

COMMON LIFT FEATURES:

- 12' movable frame length is standard with 1' length increments available - up to 24"
- Movable jack has 66" rise to top of adapter
- Fixed jack has 69" rise to top of adapter
- 3" lock increments after 18"
- 208-230, 460 or 575v 3Ø power available
- Movable jack positioned hydraulically
- Movable and fixed jacks hydraulically equalized
- Comprehensive adapter packages available
- Mag starter in enclosure comes with lift
- 10 hp explosion proof motors
- 106 gallon oil capacity

SPECIFICATIONS CERTIFIED INGROUND

Model:	70QE2xx	703QE2xx
Lifting Capacity	50,000 lbs. (22680kg)	75,000 lbs. (34020kg)
Lifting Capacity (front piston)	25,000 lbs. (11340kg)	25,000 lbs. (11340kg)
Lifting Capacity (center piston)	N/A	25,000 lbs. (11340kg)
Lifting Capacity (rear piston)	25,000 lbs. (11340kg)	25,000 lbs. (11340kg)
Power Unit	10hp (7.457kw)	10hp (7.457kw)
Pressure	350 psi	350 psi
Rise (front piston)	66" (1676mm)	66" (1676mm)
Rise (center piston)	N/A	69" (1753mm)
Rise (rear piston)	69" (1753mm)	66" (1676mm)
Piston Diameter (front piston)	10 5/8" (270mm)	10 5/8" (270mm)
Piston Diameter (center piston)	N/A	10 5/8" (270mm)
Piston Diameter (rear piston)	10 5/8" (270mm)	10 5/8" (270mm)
Std. Adapter Adjustment* (front piston)	19 1/8" - 44" (486-1118mm)	19 1/8" - 44" (486-1118mm)
Std. Adapter Adjustment* (center piston)	N/A	19 1/8" - 44" (486-1118mm)
Std. Adapter Adjustment* (rear piston)	19 1/8" - 44" (486-1118mm)	19 1/8" - 44" (486-1118mm)
Drive-Thru/Over Clearance	4 1/4" (108mm)	4 1/4" (108mm)

*Optional adapters provide adjustment range



Rotary Lift

2700 Lanier Drive
Madison, IN 47250, USA



North America Contact Information

Sales: p 800.640.5438
e userlink@rotarylif.com
Tech. Support: p 800.445.5438
e techlink@rotarylif.com

World Wide Contact Information

USA: 1.812.273.1622
Canada: 1.905.812.9920
Latin America / Caribbean: 1.812.273.1622
Brazil: +55.11.4534.1995

For additional world wide contact information and a complete guide to our product offering, visit us on the web at rotarylif.com.

Service and Support

With Rotary Lift, you have the service and support you need. Our network of service providers is the largest of its kind in the world. When it comes to assistance, we are there when and where you need us.



Assistance for Government Purchasing
Government Sales: 800.445.5438 X5655



Lit# Rotary_70Q INGROUND CUTSHEET_2015.10
©2015 VEHICLE SERVICE GROUP™, Printed in U.S.A., All Rights Reserved. Unless otherwise indicated, ROTARY LIFT, VEHICLE SERVICE GROUP™, DOVER and all other trademarks are property of Dover Corporation and its affiliates.



Made in the USA